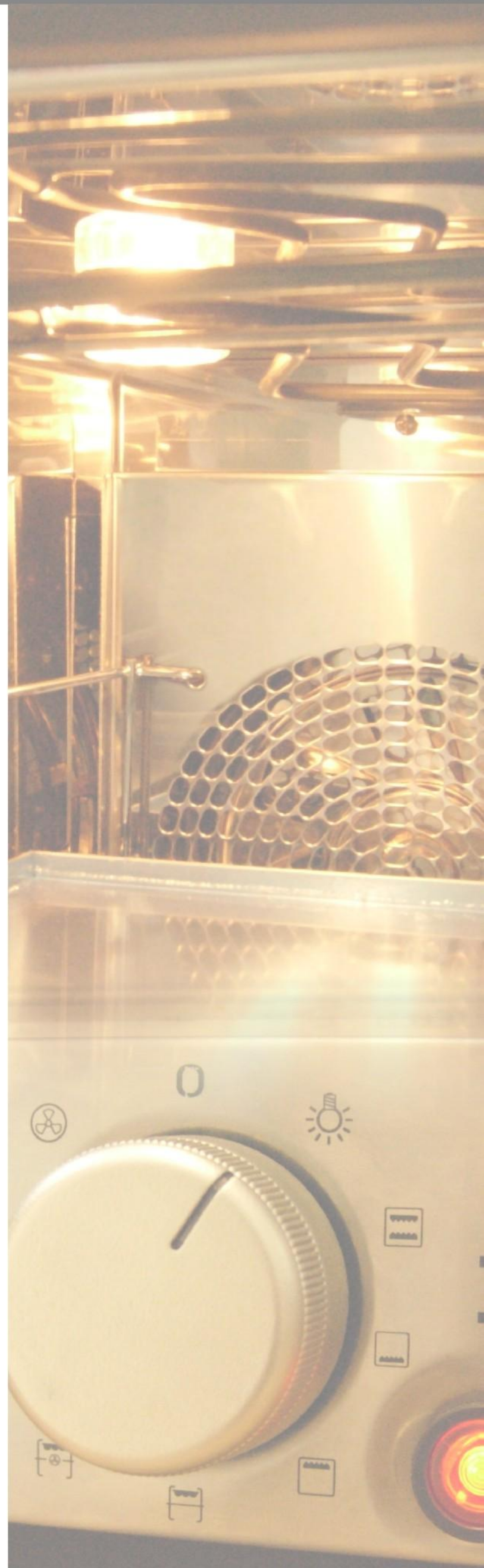
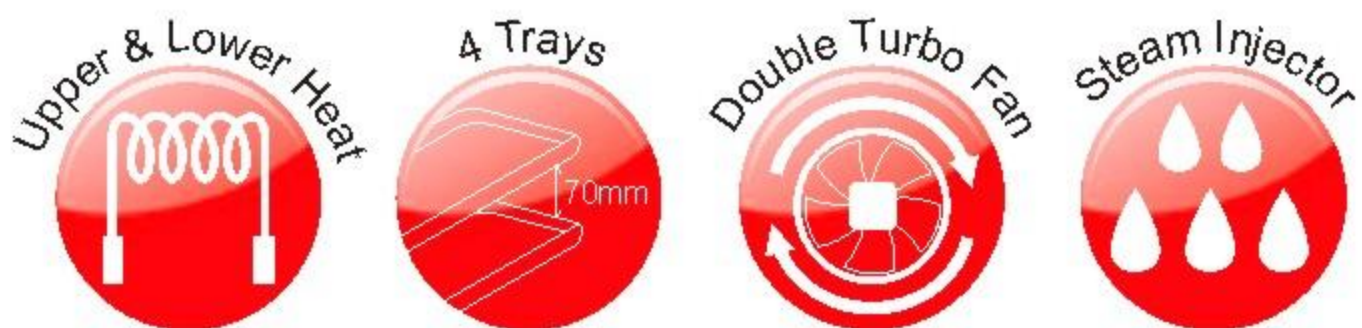
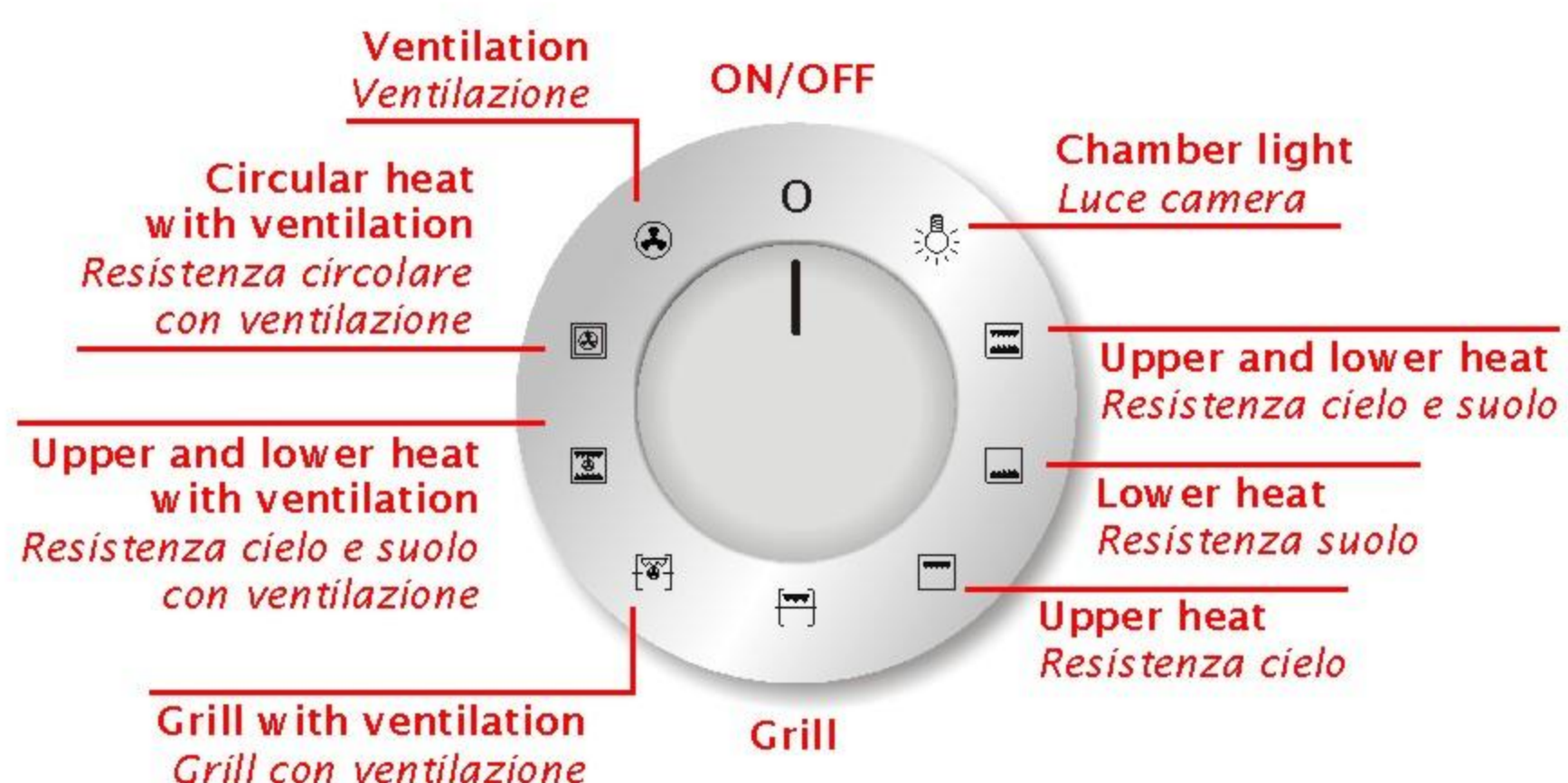


Electric Oven for Pastry and Bakery

43DXM UMI

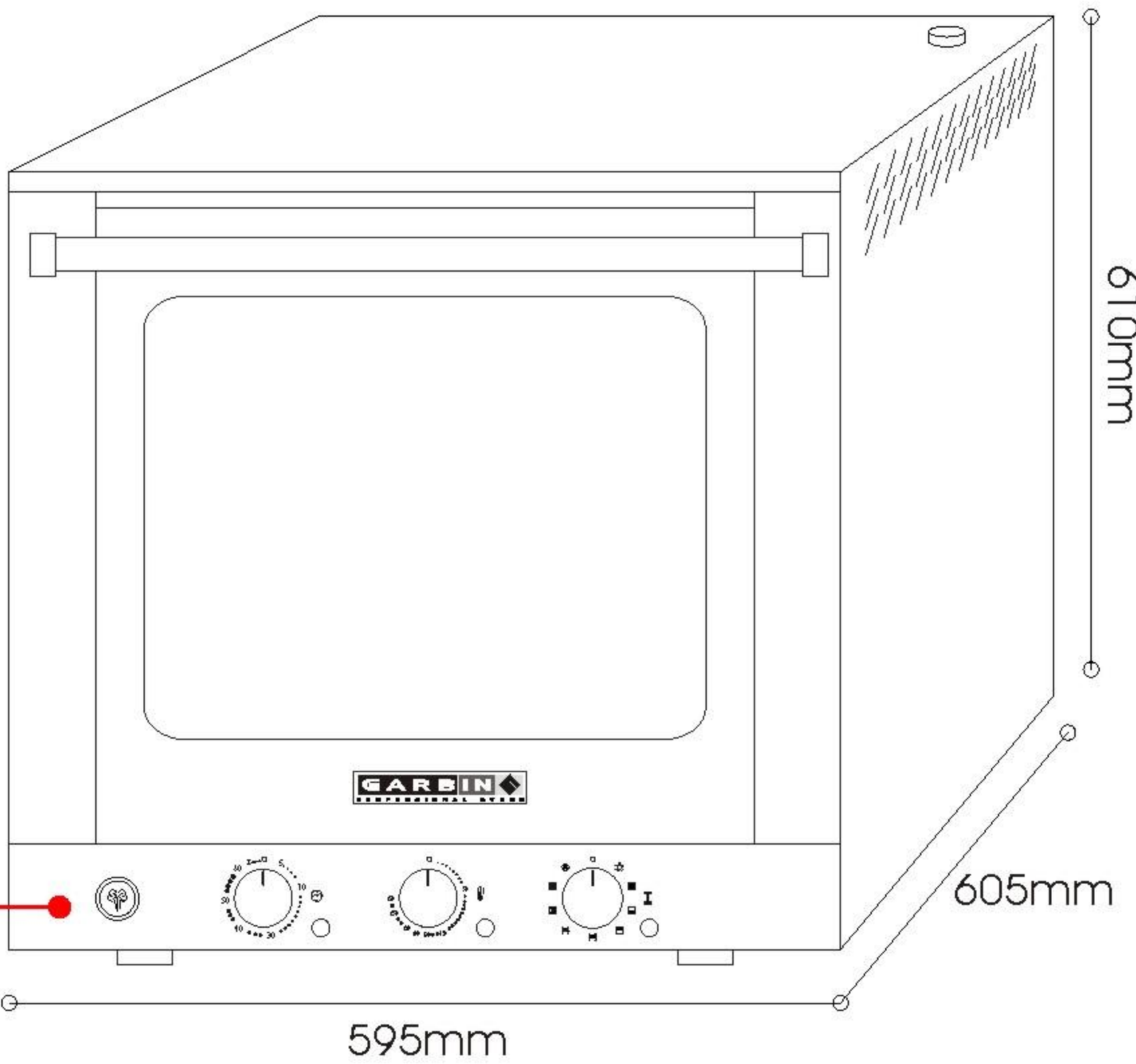


MULTIFUNCTION



Electric Oven for Pastry and Bakery

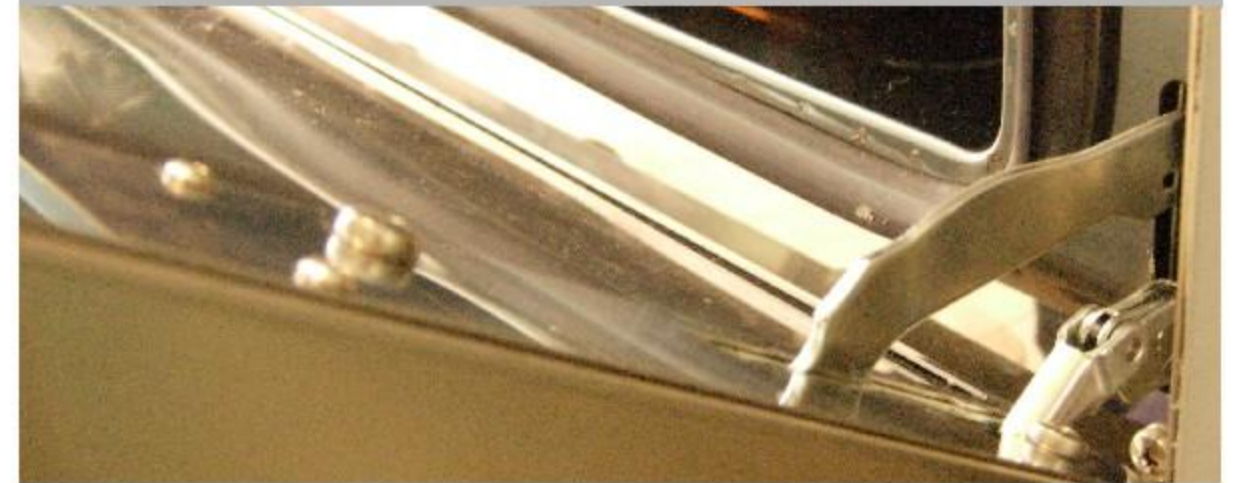
43DXM UMI



Stainless-steel chamber with standard interior light.



Durable Hinge set.



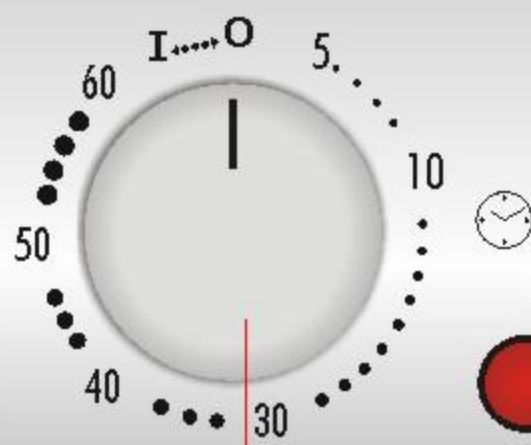
SPECIFICATION

Equipped	4 trays
Tray size	433 x 333mm
Distance between trays	70mm
Power / Voltage	2600W 240V/1PH/50Hz
External Dimensions	595(W) x 605(D) x 610(H)
Internal Dimensions	445(W) x 415(D) x 355(H)
Weight	35 kg

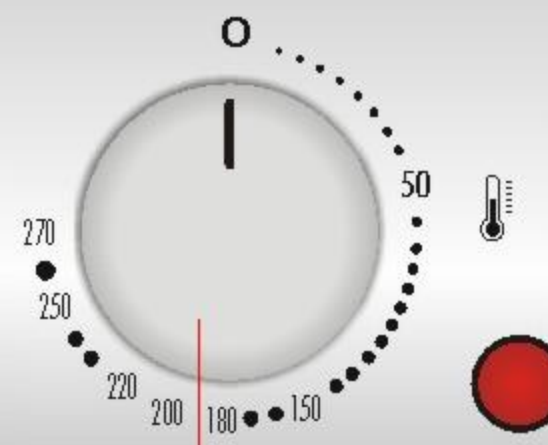
Control Panel



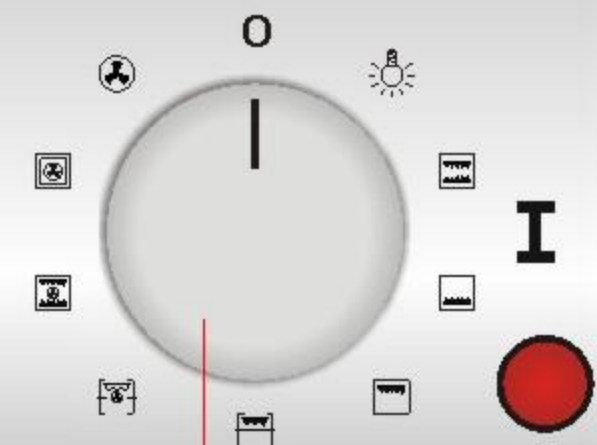
Steam Injector
Press to enables the inject steam directly into the cooking



Timer
60-minute bake timer



Thermostat
Temperature setting from 50°C~270°C



Multifunction
Selection control knob for various cooking modes

Es EPSONER
F&B Equipment Sdn Bhd

47-1, Jln. 10/91, Tmn. Shamelin Perkasa, 56100 Cheras, Kuala Lumpur.

Tel: 03-9200 7727 Fax: 03-9200 4922

Email: epsoner@tm.net.my <http://www.epsoner.com>

Nearest Distributor:-

Professional
Power Saver-Turbo-Baking System

Contact us Today!



Offer Price are available for Business / Corporate purchase

All contents are subject to change without priority notice. All trademarks are the property of their respective owners.